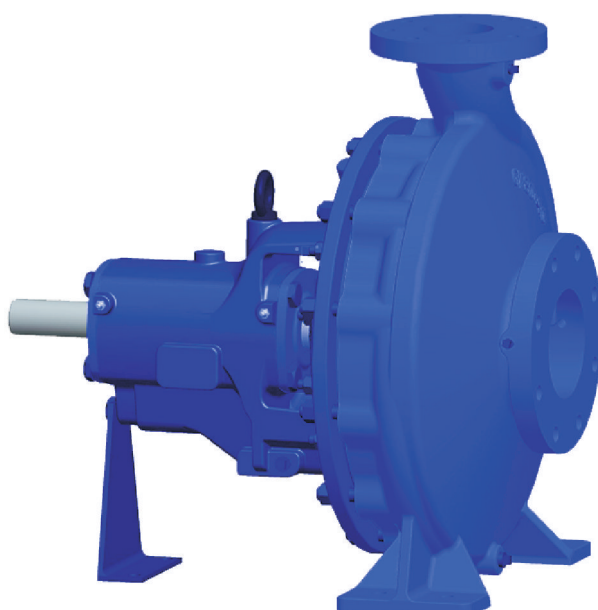




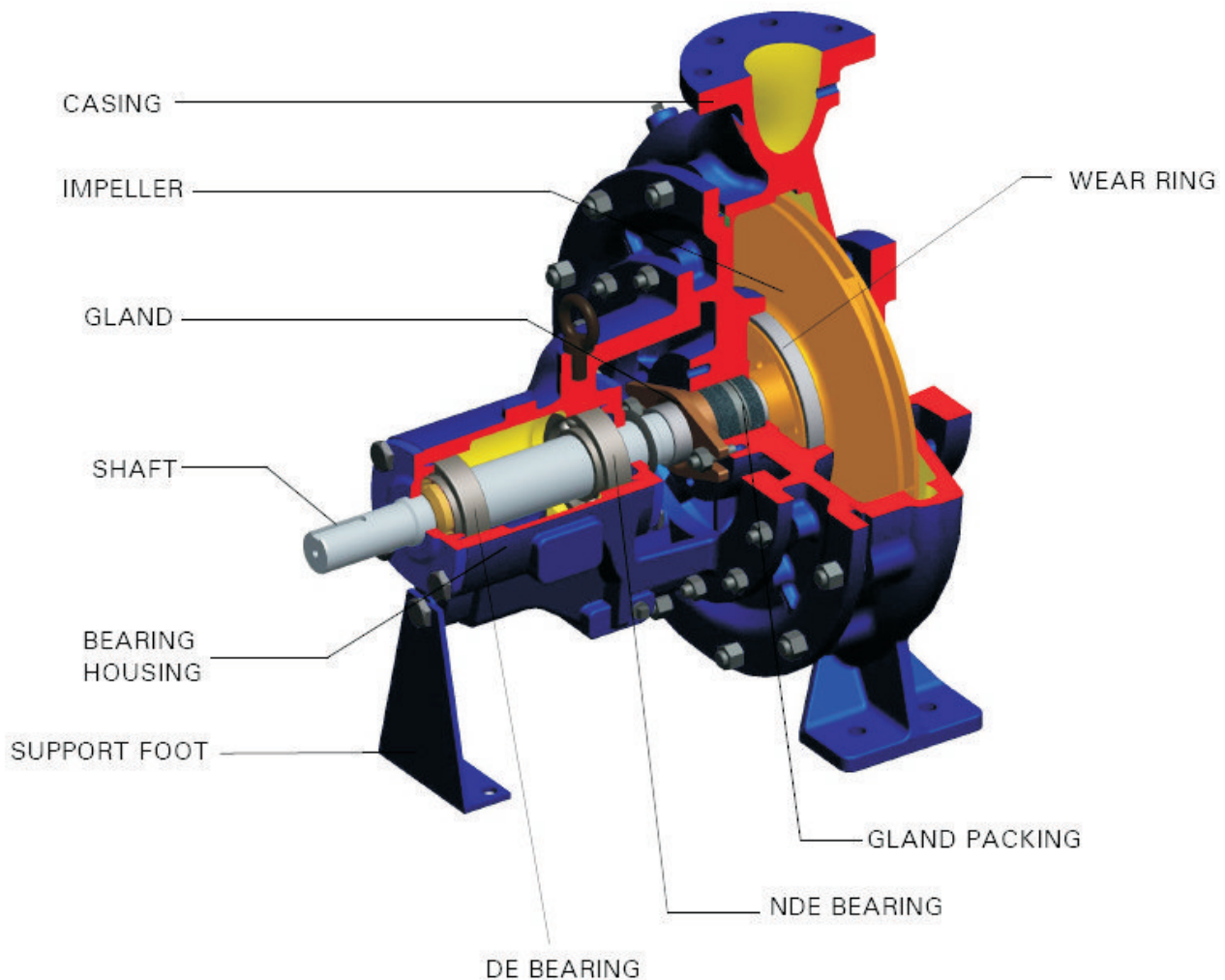
Enriching Lives

END SUCTION PUMP

TYPE - GK



KIRLOSKAR BROTHERS LIMITED



RANGE

NOMENCLATURE

Delivery size :	65 to 125 mm
Capacity :	20 to 450 m ³ /hr
Head :	up to 60 meters
RPM :	1450
Working Press. :	16 kg/cm ² (MAWP)
Temperature :	Up to 90°C (standard) without stuffing Box cooling

Applications

GK pumps are mainly used for clean and clear liquids which are free from suspended solids/particles. Few of the applications are as below:

1. Water supply.
2. Sprinkling.
3. Air conditioning.
4. Industrial water.
5. Swimming pool water.
6. Hot water (up to 90°C)
7. Fire fighting.
8. Drinking water/Potable water
9. Cooling water
10. Condensate
11. Clear juice.

CONSTRUCTIONAL FEATURES

Casing:

The casing has axial suction and top centre line delivery with self venting design. Smooth hydraulic passage ensures high efficiency. Delivery flanges and supporting feet are cast integral with the casing.

Impeller:

The impellers are of enclosed type. Hydraulic balancing of impellers is achieved either by back vanes or by balance holes depending upon magnitude of axial thrust. The impellers are statically and dynamically balanced.

Shaft:

The shaft is supported between antifriction ball bearings. The critical speed of shaft is sufficiently above the operating speed. The shaft is critically machined and ground to maintain concentricity. It is fully protected from the liquid being handled by means of shaft sleeve and 'O' ring and gasket between impeller & screw impeller.

Stuffing Box:

The gland packing arrangement in the stuffing box is 2+L+3 (i.e. 5 packings and one lantern ring). Stuffing box dimensions will be as per ISO 3069. The stuffing box is sealed by either gland packing or by cartridge type mechanical seal. Gland packed supply is standard for liquids up to 90°C.

Bearings:

The bearings are lubricated with grease as a standard supply. All pumps are provided with deep groove ball bearings arrangement.

Direction of Rotation:

Clockwise when viewed from driving end.

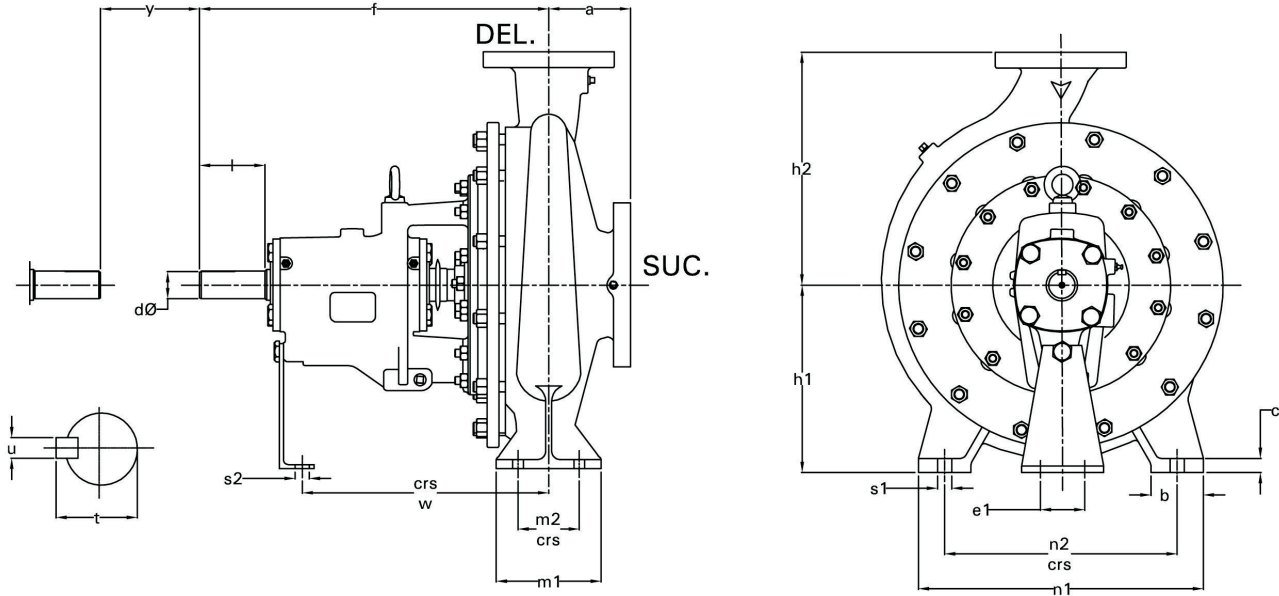
Drive:

Pumps can be driven by electric motor or engine.

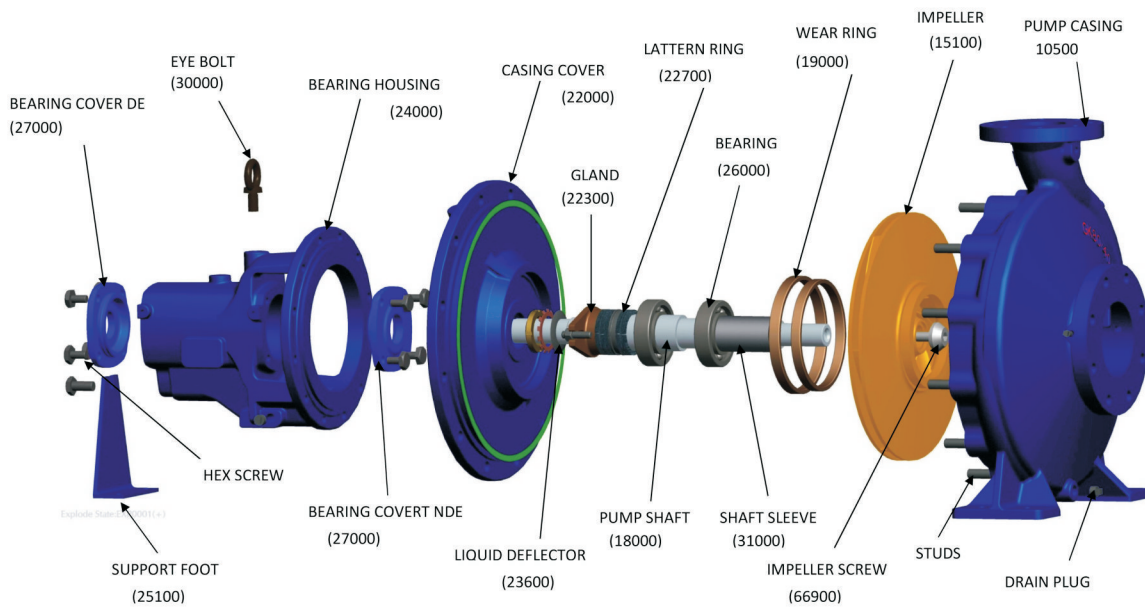
Constructional Features:

1. Conforming to ISO 5199
2. Dimensions are fully conforming to ISO 2858 / EN 22858
3. Centerline delivery self venting
4. Back pullout type design
5. Pump is having dry shaft design. (Shaft is completely protected).
6. Max. allowable working pressure is 16 kg/cm²
7. Max. Allowable suction pressure is 12 kg/cm² subject to max. working pressure is 16 kg/cm²
8. End pressure limitations:
Cast iron : 24kg/cm²
9. Flange drilling : BSEN1092 (DIN 2533 ND16) standard
Optional : ANSI class125FF, 150FF
10. Auxiliary tapping : BSP
11. Mechanical seal : cartridge type single seal (Optional)
12. Coupling : Flexible jaw type spacer coupling
13. Performance testing standard : ISO9906 Gr.2B
14. Interchangeability of components
15. Pump can be offered with CE marking

GENERAL DIMENSIONS / MOUNTING DETAILS

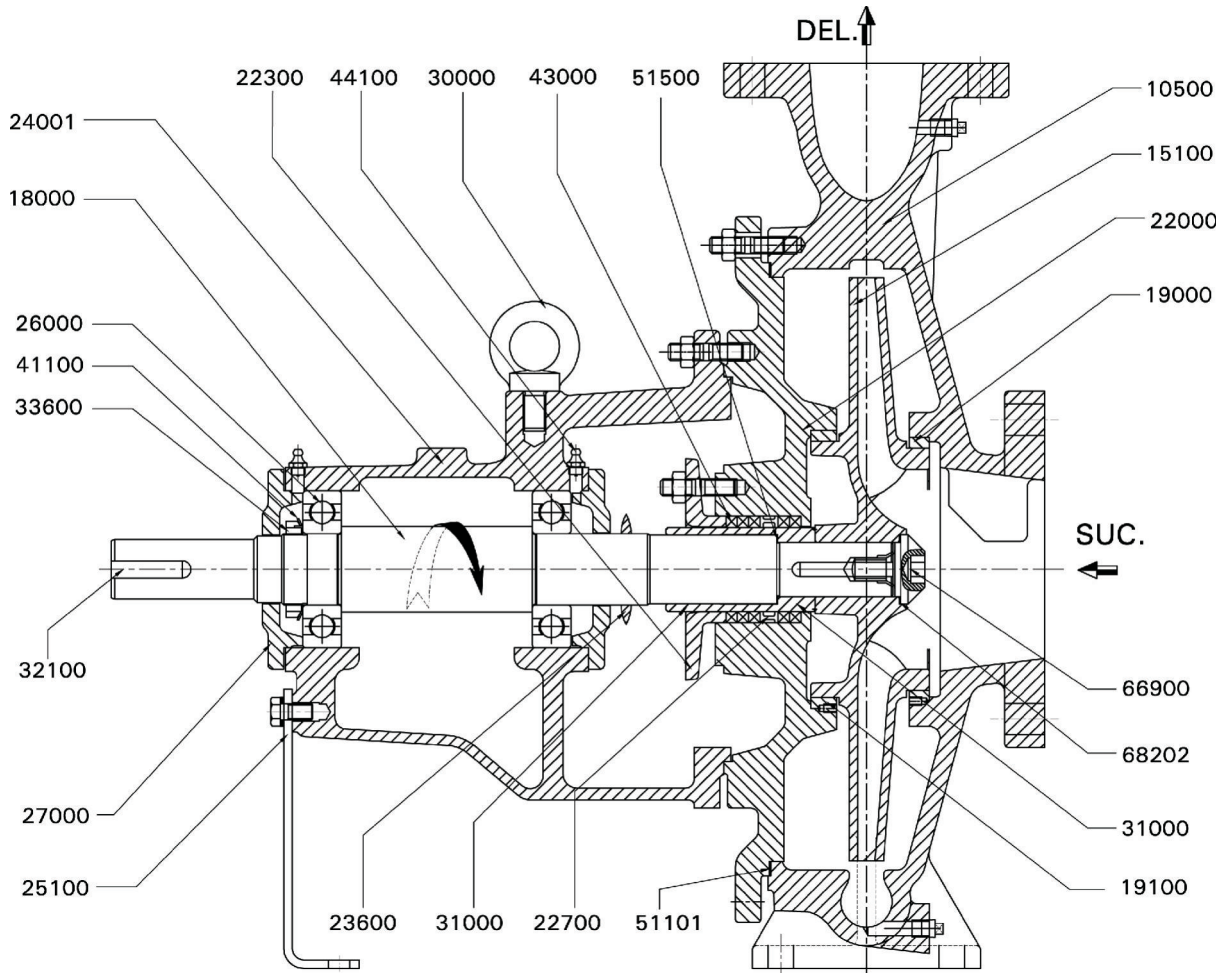


EXPLODED VIEW



PUMP SIZE	DRIVING UNIT	PUMP DIMENSIONS						FOOT DIMENSIONS								SHAFT END					APPROX WT (Kg)		
		DEL	SUC	a	f	h1	h2	b	c	m1	m2	n1	n2	w	s1	s2	e1	d	l	t		u	y
65/32B	50	65	100	125	530	225	280	80	16	160	120	400	315	370	18	15							143
80/32B		80	125	125	530	250	315	80	16	160	120	400	315	370	18	15							145
100/32B		100	125	140	530	250	315	80	16	160	120	400	315	370	18	15							152
125/32A		125	150	140	530	280	355	100	18	200	150	500	400	370	18	15							160
125/32B		125	150	140	530	280	355	100	18	200	150	500	400	370	23	15							161
80/40B		80	125	125	530	280	355	80	16	160	120	435	355	370	18	15	110	42	100	45	12	140	175
100/40A		100	125	140	530	280	355	100	16	200	150	500	400	370	23	15							197
100/40B		100	125	140	530	280	355	100	16	200	150	500	400	370	23	15							200
100/26B		100	125	140	530	225	280	80	16	160	120	400	315	370	18	15							135
125/26A		125	150	140	530	250	355	80	16	160	120	400	315	370	18	15							135

CROSS SECTIONAL ASSEMBLY



PART NO.	DESCRIPTION	PART NO.	DESCRIPTION
10500	PUMP CASING	31000	SHAFT SLEEVE
15100	IMPELLER	32000	KEY FOR IMPELLER
18000	SHAFT	32100	KEY FOR COUPLING
19000	CASING RING SUC SIDE	33600	BEARING LOCK NUT
19100	CASING RING DEL SIDE	41100	LOCK WASHER
22000	CASING COVER	43000	GLAND PACKING
22700	LANTERN RING	44100	GREASE NIPPLE
22300	GLAND	48500	CIRCLIP
23600	LIQUID DEFLECTOR	51100	GASKET FOR CASING COVER
24000	BEARING HOUSING	51500	GASKET FOR SHAFT SLEEVE
25100	SUPPORT FOOT	52500	'O' RING FOR SHAFT SLEEVE
26000	BEARING SKF OR EQ	66900	IMPELLER SCREW
27000	BEARING COVER DE, NDE	68202	GASKET FOR IMPELLER SCREW
30000	EYE BOLT		

MATERIAL OF CONSTRUCTION

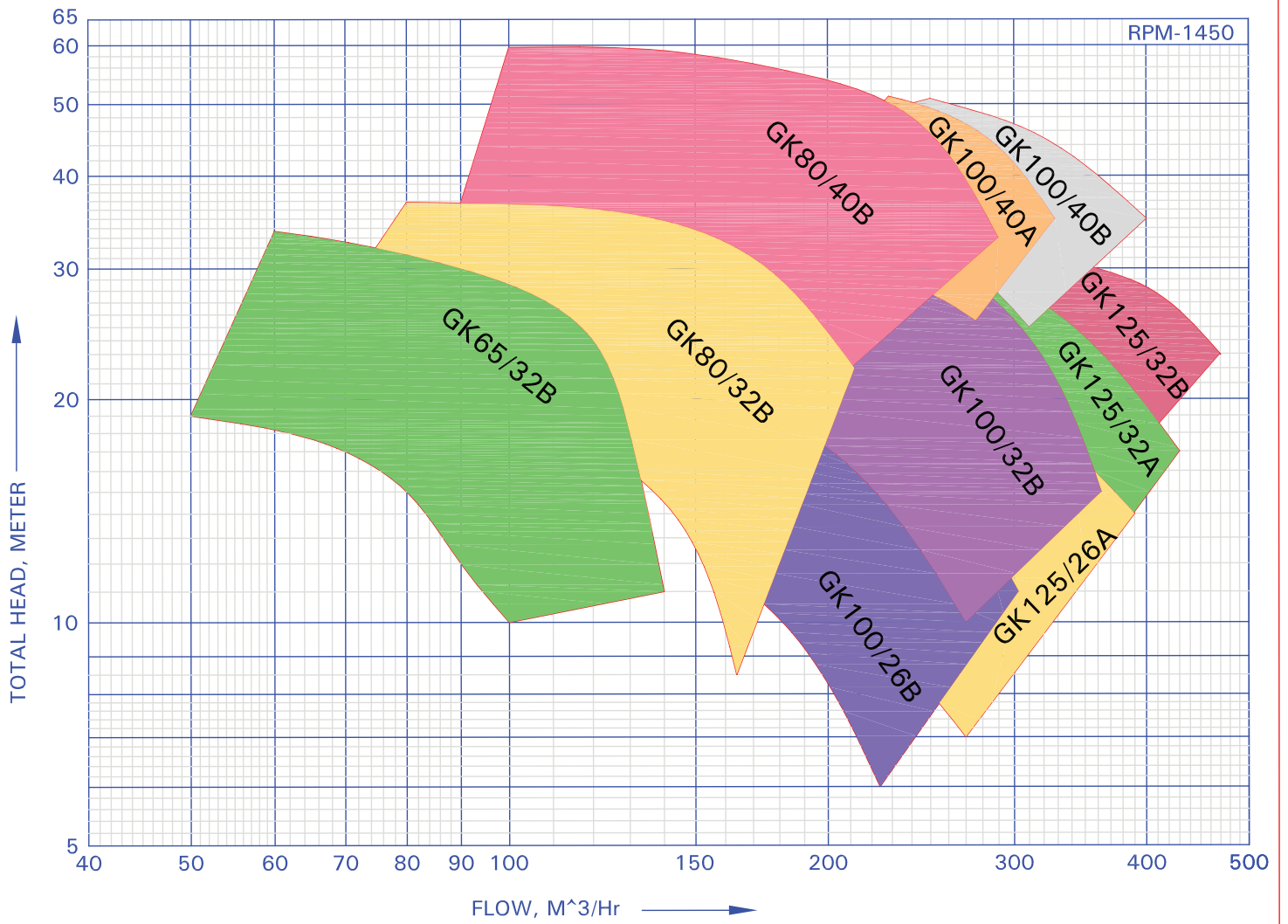
Pump Casing / Casing Cover	: Cast Iron /CF8M /CF8
Impeller	: Cast Iron / Bronze / CF8M/ CF8
Wear Rings	: Cast Iron / Bronze/ CF8
Pump Shaft	: Carbon Steel / Stainless Steel ASTM Gr. CS IS1570-(PART-II)-40C8 / ASTM A 107 Gr.1040
Shaft Sleeve	: Stainless Steel ASTM Gr. St. Steel –ASTM A 276 Type 316/410

MATERIAL STANDARDS - GENERAL INFORMATION

Material Type	Indian Standard (IS)	American standard (ASTM)	DIN
Cast Iron			
Cast Iron	IS 210 Gr. FG 260	ASTM A48 Class 40	(0.6025)DIN 1691 GG25
Spheroidal Graphite Cast Iron			
SG Iron (Ductile Iron)	IS 1865 Gr 400/15	A536, 60-40-18	(0.7040)DIN1693 GGG40
SG Iron (Ductile Iron)	IS 1865 Gr 500/7	A536, 65-45-12	(0.7050)DIN1693 GGG50
Carbon steel			
Carbon steel (Wrought)	IS 1570 (part II)Gr. 40C8	ASTM A107 Gr. 1040	(1.1186)C40E/CK40
Carbon steel (Wrought)	IS 1570 (part II) Gr. 20C8	ASTM A107 Gr. 1020	(1.0402)C22
MS Steel	MS IS 2062 - Fe 410 W A	ASTM-A283 Gr.D	DIN 1700 GR ST4-2 FABRICATED STEEL44
Cast Steel Grades			
Cast steel		ASTMA 216 Gr. WCB	1.0619(GS-C25)
Cast Stainless Steel			
Stainless Steel CF8M	IS 3444 Gr. 4	ASTMA 351 Gr. CF8M	1.4408(GX5CrNiMo19-11-2)
Stainless Steel CF8M	IS 3444 Gr. 4	ASTMA 743 Gr. CF8M	1.4408(GX5CrNiMo19-11-2)
Stainless Steel CF3M	IS 3444 Gr. 16	ASTMA 351 Gr. CF3M	1.4409(GX2CrNiMo19-11-2)
Stainless Steel CF3M	IS 3444 Gr. 16	ASTMA 743 Gr. CF3M	1.4409(GX2CrNiMo19-11-2)
Stainless Steel CF8	IS 3444 Gr. 1	ASTMA 351 Gr. CF8	1.4301(X5CrNi18-10)
Stainless Steel CF3	IS 3444 Gr. 15	ASTMA 351 Gr. CF3	1.4306(X2CrNi19 11)
Cast Chromium StainlessSteel			
Stainless Steel CA15	IS 3444 Gr. 10	ASTMA 217 Gr. CA15	1.4106&1.448(DIN17445 GX12Cr14)
Stainless Steel CA15	IS 3444 Gr. 10	ASTMA 743 Gr. CA15	1.4106&1.448(DIN17445 GX12Cr14)
Stainless Steel CA6NM	IS 3444 Gr. 24	ASTMA 487 Gr. CA6NM	1.4313&1.4317(GX5CrNiMo13-4)
Stainless Steel CA6NM	IS 3444 Gr. 24	ASTMA 743 Gr. CA6NM	1.4313&1.4317(GX5CrNiMo13-4)
Chromium StainlessSteel Round Bar Material			
Stainless steel 410	IS 1570 (part V) Gr. X12Cr12	ASTMA 276 type 410	1.4006(X10Cr13)
Stainless steel 420	IS 1570 (part V) Gr. X20Cr13	ASTMA 276 type 420	1.4021(X20Cr13)
Stainless steel 431	IS 1570 (part V) Gr. X15Cr16Ni2	ASTMA 276 type 431	1.4057(X20CrNi17)
Stainless steel 316	IS 1570 (part V) Gr. X04Cr17Ni12Mo2	ASTMA 276 type 316	1.4401(X5CrNiMo17122)
Stainless steel 316L	IS 1570 (part V) Gr. X02Cr17Ni12Mo2	ASTMA 276 type316L	1.4404(X2CrNiMo1810)
Cast Duplex Steel			
Duplex Steel 1A		ASTMA 890 Gr. CD4MCu	25Cr-5Ni-Mo-Cu
Duplex Steel 2A		ASTMA 890 Gr. CE8MN	24Cr-10Ni-Mo-N
Duplex Steel 3A		ASTMA 890 Gr. CD6MN	25Cr-5Ni-Mo-N
Super Duplex steel 4A		ASTMA 890 Gr. CD3MN	25Cr-7Ni-Mo-N
Super Duplex steel 5A		ASTMA 890 Gr. CE3MN	24Cr-10Ni-Mo-N
Non Ferious Materials			
Bronze	IS 318 Gr. LTB2 (CuSn5Zn5Pb5C)	ASTMB 584 - C90500	DIN 1705 Rg 5
Phosphor Bronze	IS 28 Gr. 1 (CuSn11PC)		
Zinc Free Bornze	IS 28 Gr. 1 (CuSn10C)		

FAMILY CURVES

FAMILY CURVE FOR GK PUMP



OUR GLOBAL PRESENCE



As we are constantly endeavouring to improve the performance of our products/ equipment, we reserve the right to make alterations from time to time and as such our products/ equipment may differ from that detailed in this publication. For latest information you may get in touch with our Regional Sales Offices.



Enriching Lives

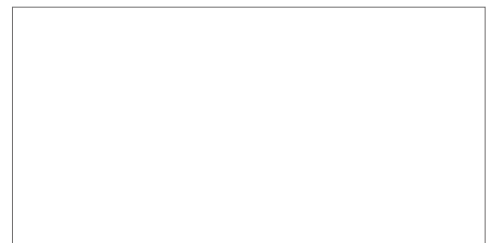
KIRLOSKAR BROTHERS LIMITED

CORPORATE OFFICE :

"YAMUNA" Survey No. 98 (3/7), Baner,
Pune - 411045, INDIA
Tel.: +91 20 27214444 Fax: +91 20 27211117
email: kblin@kbl.co.in website: www.kirloskarpumps.com

WORKS :

Kirloskarvadi 416308 Dist. Sangli
Maharashtra, INDIA
Tel.: +91 2346 222301 to 222305
Fax: +91 2346 222311



KIRLOSKAR BROTHERS LIMITED
GK - REV00/AUG 2012/EVG